

---

# **HEALTH INDICATOR DATA BOOK**

**A Comparison of Access and Quality Measures  
for Rhode Islanders <65 years old  
by Health Insurance Coverage – Trends 1995-2007**

---

**Produced by:  
Jane Griffin, MPH  
RI Medicaid Research and Evaluation Project  
Division of Health Care Quality, Financing and Purchasing  
RI Department of Human Services**

**June 2009**

## ACKNOWLEDGMENTS

The Health Indicator Databook 1995-2007 was produced with the help of several agencies and people. Special thanks goes to: Samara Viner-Brown from the Department of Health, who as part of the Interagency Agreement with the Department of Human Services, provided several public health data sets to the project. These data sets include: Vital Statistics – Birth and Death Files, Hospital Discharge Data Set, Behavioral Risk Factor Surveillance System and the Pregnancy Risk Assessment System.

Many people provided technical expertise and data programming for the following data sets:

1. Current Population Survey – Jessica Smith, US Census Bureau
2. Behavioral Risk Factor Surveillance System – Jana Hesser, Kathy Taylor, RI Dept. of Health
3. Hospital Discharge Data Set – Kathy Taylor, RI Department of Health, Richard Arigo
4. RI Vital Statistics – Birth and Death Files – Kathy Taylor, Rachel Cain, RI Department of Health
5. Pregnancy Risk Assessment Monitoring System – Rachel Cain, RI Department of Health

# TABLE OF CONTENTS

	Page
Purpose	11
Highlights	12
Methods	14
Population Groups	15
Types of Measures	16
List of Health Indicators by Type of Measure	17
1. Demographic	17
2. Access to Health Care	18
3. Health Status	20
4. Social Measures	22

	Page
Section I: Health Indicators for <b>Uninsured Rhode Islanders</b> by Age	23
Ia: List of Health Indicators and Technical Notes	23
Ib: Health Indicator Data Table for Uninsured Rhode Islanders	24
Percent of Uninsured by Age Groups	24
Percent of Rhode Islanders with Employer Based Coverage	24
Percent of Rhode Islanders on Medicaid	24
Section II: Health Indicators for <b>Access to Health Care for Rhode Islanders</b> by Health Coverage	29
IIa: List of Health Indicators and Technical Notes	29
IIb: Health Indicator Data Table - Access Measures	30
Couldn't See Doctor Due to Cost	30
Had a Routine Check-up in Past Year	30

Section III: Health Indicators for <b>Hospitalizations to Rhode Islanders</b> <65 years old by Health Coverage	32
IIIa: List of Health Indicators and Technical Notes	32
IIIb: Health Indicator Data Table for RI Hospitalizations	33
Demographic Characteristics of Hospitalizations	33
Hospitalizations for Mental Disorders	34
Hospitalizations for Ambulatory Care Sensitive Conditions	35
Hospital Length of Stay	37
 Section IV: Health Indicators for <b>Prenatal Care and Birth Outcomes</b> by Health Coverage	 42
IVa: List of Health Indicators and Technical Notes	42
IVb: Health Indicator Data Table for Pregnant Women and Births – Medical Outcomes	43
Births to Teens	43
Second Time Births to Teens	43
Birth with High Parity	44
Maternal Smoking	44
Short Interbirth Interval	44
Cesarean Birth	45
Low Birthweight	
Very Low Birthweight	45

Prematurity	45
Multiple Births	45
Infant Mortality	46
<b>Section V: Health indicators for Health Behaviors and Life Stress for Women During Pregnancy and Postpartum Period by Health Coverage</b>	<b>52</b>
Va: List of Health Indicators and Technical Notes	52
Vb: Health Indicator Data Table for Pregnant Women and Births – Health And Social Outcomes	53
Breastfeeding	53
Family Planning/Contraception	53
Financial Problems	53
Maternal Depression	54

	Page
List of Figures	
Figure 1: Percent of Uninsured Rhode Islanders – All Ages	25
Figure 2: Percent of Uninsured RI Children (<18)	26
Figure 3: Percent of Uninsured Rhode Islanders (<65)	27
Figure 4: Percent of Rhode Islanders with Employer Based Coverage (<65)	28
Figure 5: Percent of Rhode Islanders (18-64) Who Had a Routine Check-up in Past Year by Health Insurance Coverage	31
Figure 6: Percent of RI Hospitalizations with Primary Diagnosis of Mental Disorder for Children <18 by Health Insurance Coverage	38
Figure 7: Percent of RI Hospitalizations with Primary Diagnosis of Mental Disorder for Adults 18-64 by Health Insurance Coverage	39
Figure 8: Percent of Hospitalizations >7 Days for Children <18 by Health Insurance Coverage	40

Figure 9: Percent of Hospitalizations >7 Days for Adults 18-64 by Health Insurance Coverage	41
Figure 10: Percent Repeat Births to Teen Mothers (<20) by Health Insurance Coverage	47
Figure 11: Percent of Births to Women with High Parity ( $\geq 3$ Children) by Health Insurance Coverage	48
Figure 12: Percent of Pregnant Women Who Smoke Cigarettes by Health Insurance Coverage	49
Figure 13: Percent of Cesarean Births by Health Insurance Coverage	50
Figure 14: Percent of Premature Births (<37 weeks) by Health Insurance Coverage	51
Figure 15: Percent of Mothers Who Breastfeed by Health Insurance Coverage	55
Figure 16: Percent of Pregnant Women Who Couldn't Pay Bills During Pregnancy By Health Insurance Coverage	56

## **PURPOSE OF HEALTH INDICATOR DATA BOOK**

To assess, design, monitor and evaluate health services and program interventions for Rhode Islanders on Medicaid using existing public health data sets.

The trend data in this report is designed to determine unmet health needs, measure access to care, and evaluate health outcomes of Medicaid enrollees compared to Rhode Islanders on Private Insurance or the Uninsured.

*1 – See Griffin J, Health Indicator System for Rhode Islanders on Medicaid: An Effective Model to Identify Unmet Health Care Needs and Evaluate Program Initiatives, Robert Wood Johnson, Center for Health Care Strategies Resource Paper #271, April 2005*

## HIGHLIGHTS

### Access to Care

- Uninsured Rhode Islanders (ages 18-64) have poor access to primary care. In 2007 almost half of the Uninsured (46.9%) were not able to see a doctor in the past year due to cost and only 45.2% of the uninsured had a routine visit in the past year (see page 30).
- The proportion of RI hospitalizations with a primary diagnosis of mental disorder is declining for adults on fee-for-service Medicaid. In 2001 32.8% of the hospitalizations for adults 18-64 on fee-for-service Medicaid were for mental hospitalizations and this percentage decreased to 29.2% in 2007 (see page 35).

## Health Status – Prenatal Care and Birth Outcomes

- Smoking rates among pregnant women on RItE Care have declined significantly in the past twelve years from 29.2% in 1995 to 18.7% in 2007 (see page 44).
- Rates of prematurity have increased significantly in the past twelve years. The rise in prematurity from 6.8% of RItE Care births in 1995 to 10.9% of RItE Care births in 2007 is of concern because of its association with poor infant outcomes (see page 45).
- Rates of Cesarean Births have also risen significantly for both mothers on RItE Care and privately insured mothers. In 1995 18.1% of RItE care deliveries were cesarean and in 2007 the cesarean rate rose to 29.2%. The rise in cesarean deliveries was even higher for privately insured mothers. Their cesarean rate rose from 19.9% in 1995 to 35.5% in 2007 (see page 45).
- From 1996 to 2007 the Infant Mortality rate has decreased for infants on RItE Care whereas it has increased for privately insured infants. The RItE Care infant mortality rate per 1,000 births decreased from 9.4 to 6.9 and the privately insured rate increased from 5.3 to 6.6 (see page 46).

# METHODS

## Health Indicator Selection Criteria:

RI population based reliable data set that is:

- Collected annually, so trend comparisons can be made
- Collects insurance coverage, so comparisons can be made between Medicaid, Rite Care, Privately Insured and Uninsured

## Five Data Sets that met these criteria:

1. Current Population Survey (CPS),  
Annual Social and Economic Supplement (ASES), Census, 1995-2007
2. Behavioral Risk Factor Surveillance System (BRFSS) 1996-2007, RI Department of Health
3. Hospital Discharge Data Set (HD) 2001-2007, RI Department of Health
4. RI Vital Statistics – Birth & Death Files (VS) – 1995-2007, RI Department of Health
5. Pregnancy Risk Assessment Monitoring System (PRAMS) 2002-2007, RI Department of Health

## **POPULATION GROUPS**

- The Uninsured
- Adults > age 18
- Hospitalizations
- Pregnant Women
- Births
- Postpartum Women

# TYPES OF MEASURES

Health Indicators in this report provide measures in the following areas:

- Demographic Characteristics
- Access to Health Care
- Utilization
- Health Status
- Social Measures

**LIST OF HEALTH INDICATORS FOR RHODE ISLANDERS BY TYPE OF MEASURE**

<b>DEMOGRAPHIC CHARACTERISTICS</b>				
<b>Indicator #</b>	<b>Health Indicator</b>	<b>Years Available</b>	<b>Data Set</b>	<b>Page #</b>
III-4	Percent of Hospitalizations to Females	2001 – 2007	Hospital Discharge	33
III-5	Percent of Hospitalizations to Minorities	2001 – 2007	Hospital Discharge	34
III-7	Percent of Hospital Admissions for Newborn Deliveries	2001 – 2007	Hospital Discharge	34
IV-2	Total Number of Teen Births by Health Insurance Coverage	1995 – 2007	Vital Statistics Birth File	43
IV-3	Percent of Total Births to Teenagers by Health Insurance Coverage	1995 – 2007	Vital Statistics Birth File	43
IV-5	Percent of Births to Women (>=35) by Health Insurance Coverage	1995 – 2007	Vital Statistics Birth File	43
IV-6	Percent of Births to Hispanic Women by Health Insurance Coverage	1995 – 2007	Vital Statistics Birth File	44
IV-7	Percent of Births to Black Women by Health Insurance Coverage	1995 - 2007	Vital Statistics Birth File	44

**LIST OF HEALTH INDICATORS FOR RHODE ISLANDERS BY TYPE OF MEASURE**

<b>ACCESS TO HEALTH CARE</b>				
<b>Indicator #</b>	<b>Health Indicator</b>	<b>Years Available</b>	<b>Data Set</b>	<b>Page #</b>
I (1-3)	Percent of Uninsured Rhode Islanders by Age	1995 – 2007	CPS, Census	24
I-4	Percent of Rhode Islanders with Employer Based Coverage (<65)	1995 – 2007	CPS, Census	24
I-5	Percent of Rhode Islanders with Medicaid Coverage (<65)	1995 – 2007	CPS, Census	24
II-1	Percent of Rhode Islanders Who Couldn't See Doctor Due to Cost (ages 18-64) by Health Insurance Coverage	1996 – 2007	BRFSS	30
II-2	Percent of Rhode Islanders Who Had a Routine Check-up in Past Year (ages 18-64) by Health Insurance Coverage	1996 – 2007	BRFSS	30
III-6	Percent of Emergency Hospital Admissions	2001 – 2007	Hospital Discharge	34
III (10-11)	Rate of Hospitalizations for Ambulatory Care Sensitive Conditions (ACS) by Age Group and Health Insurance Coverage	2001 – 2007	Hospital Discharge	35

**LIST OF HEALTH INDICATORS FOR RHODE ISLANDERS BY TYPE OF MEASURE**

**ACCESS TO HEALTH CARE**

<b>Indicator #</b>	<b>Health Indicator</b>	<b>Years Available</b>	<b>Data Set</b>	<b>Page #</b>
V-2	Percent of New Mothers Using Contraception by Health Insurance Coverage	2002 – 2007	Prenatal Risk and Monitoring System (PRAMS)	53
V-3	Percent of Mothers Who Had Postpartum Checkup by Health Insurance Coverage	2002 - 2007	Prenatal Risk and Monitoring System (PRAMS)	53

**LIST OF HEALTH INDICATORS FOR RHODE ISLANDERS BY TYPE OF MEASURE**

<b>HEALTH STATUS</b>				
<b>Indicator #</b>	<b>Health Indicator</b>	<b>Years Available</b>	<b>Data Set</b>	<b>Page #</b>
III (8-9)	Percent of Hospitalizations with Primary Diagnosis of Mental Disorder by Age Group and Health Insurance Coverage	2001 – 2007	Hospital Discharge	34-35
III (12-15)	Percent of Hospitalizations - >7 or >30 Days by Age Group and Health Insurance Coverage	2001 – 2007	Hospital Discharge	36
III (16-17)	Average Length of Stay for Hospitalizations in Days by Age Group and Health Insurance Coverage	2001 – 2007	Hospital Discharge	37
IV-4	Percent of Repeat Births to Teen Mothers by Health Insurance Coverage	1995 – 2007	Vital Statistics Birth File	43
IV-8	Percent of RI Births to Women with High Parity (>3) by Health Insurance Coverage	1995 – 2007	Vital Statistics Birth File	44
IV-9	Percent of Pregnant Women Who Smoke Cigarettes by Health Insurance Coverage	1995 – 2007	Vital Statistics Birth File	44
IV-10	Percent of Women with Short Interbirth Interval (<18 months) by Health Insurance Coverage	1995 – 2007	Vital Statistics Birth File	44
IV-11	Percent of Cesarean Births by Health Insurance Coverage	1995 – 2007	Vital Statistics Birth File	45
IV-12	Percent of Low Birthweight Infants (<2500 grams) by Health Insurance Coverage	1995 – 2007	Vital Statistics Birth File	45
IV-13	Percent of Very Low Birthweight Infants (<1500 grams) by Health Insurance Coverage	1995 – 2007	Vital Statistics Birth File	45
IV-14	Percent of Premature Births (<37 weeks) by Health Insurance Coverage	1995 – 2007	Vital Statistics Birth File	45
IV-15	Percent of Multiple Births by Health Insurance Coverage	1995 – 2007	Vital Statistics Birth File	45

**LIST OF HEALTH INDICATORS FOR RHODE ISLANDERS BY TYPE OF MEASURE**

<b>HEALTH STATUS</b>				
<b>Indicator #</b>	<b>Health Indicator</b>	<b>Years Available</b>	<b>Data Set</b>	<b>Page #</b>
IV-16	Neonatal Mortality (<28 days) by Health Insurance Coverage	1995 – 2007	Vital Statistics Birth & Death Files	46
IV-17	Postneonatal Mortality (28-365 days) by Health Insurance Coverage	1995 – 2007	Vital Statistics Birth & Death Files	46
IV-18	Infant Mortality (<1 year) by Health Insurance Coverage	1995 - 2007	Vital Statistics Birth & Death Files	46
V-1	Percent of RI Mothers Who Breastfed by Health Insurance Coverage	2002 – 2007	PRAMS	53

**LIST OF HEALTH INDICATORS FOR RHODE ISLANDERS BY TYPE OF MEASURE**

**SOCIAL MEASURE**

<b>Indicator #</b>	<b>Health Indicator</b>	<b>Years Available</b>	<b>Data Set</b>	<b>Page #</b>
V-4	Percent of Pregnant Women Who Moved During Pregnancy by Health Insurance Coverage	2002 – 2007	PRAMS	53
V-5	Percent of Pregnant Women Who were Homeless During Pregnancy by Health Insurance Coverage	2002 – 2007	PRAMS	53
V-6	Percent of Pregnant Women Who Couldn't Pay Bills During Pregnancy by Health Insurance Coverage	2002 – 2007	PRAMS	53
V-7	Percent of Pregnant Women Who Argued More With Husband/Partner During Pregnancy by Health Insurance Coverage	2002 – 2007	PRAMS	54
V-10	Percent of Pregnant Women Whose Pregnancies are Unplanned by Health Insurance Coverage	2002 - 2007	PRAMS	54

<b>Section Ia: List of Health Indicators for Uninsured Rhode Islanders by Age 2001-2007: CPS Census</b>	
1) Percent Uninsured – all ages – one, two, and three year averages	
2) Percent Uninsured Children (<18) – one, two, and three year averages	
3) Percent Uninsured Rhode Islanders (<65) – one, two, and three year averages	
4) Percent of Rhode Islanders with Employer Based Coverage (<65)	
5) Percent of Rhode Islanders with Medicaid Coverage (<65)	

Data Source: Current Population Survey, Census 2001-2007

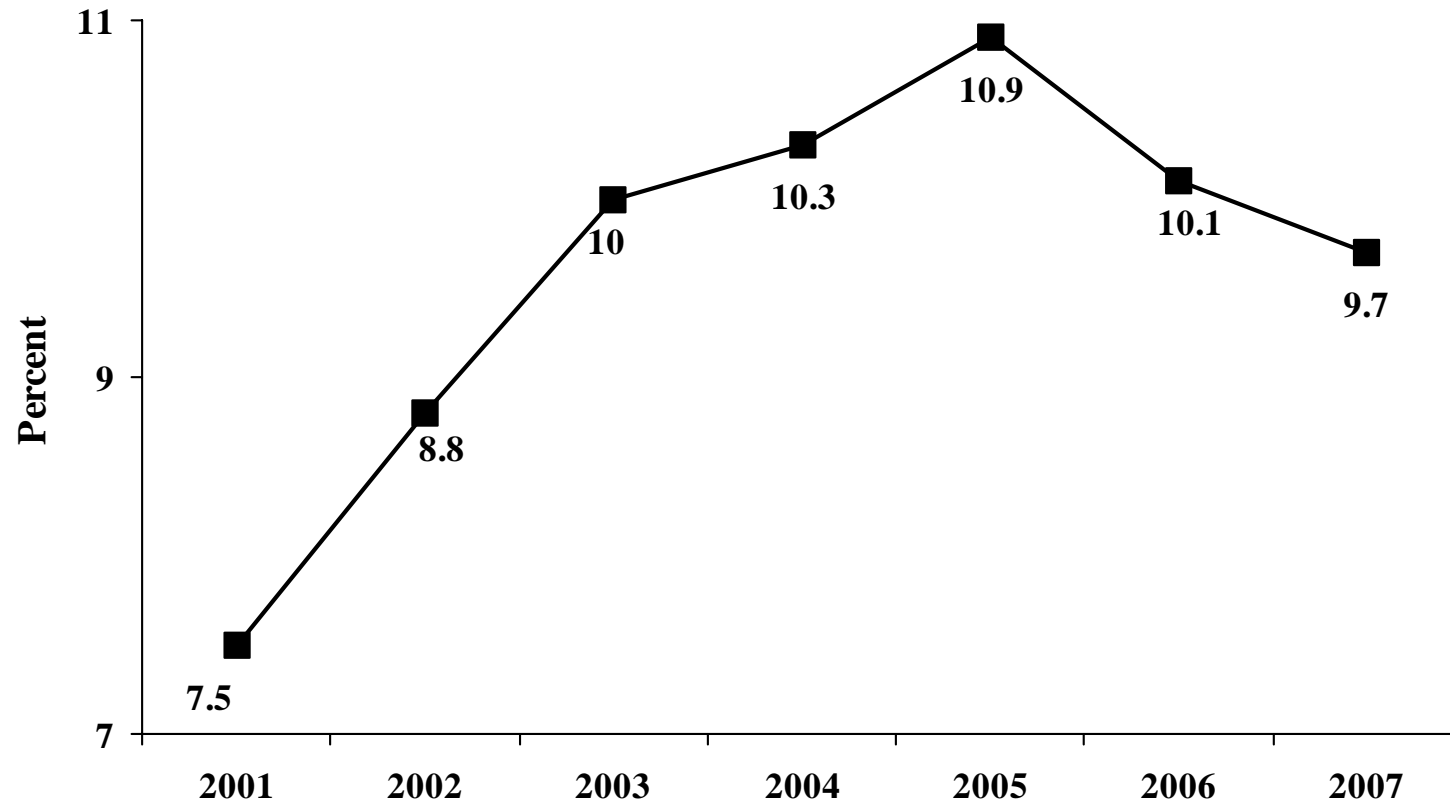
Technical Notes: September Estimates

**Section Ib: Health Indicator Data Table for Uninsured Rhode Islanders by Age 2001-2007**

	2001	2002	2003	2004	2005	2006	2007
1) Percent Uninsured – all ages							
One year average	7.7	9.8	10.2	10.4	11.5	8.6	10.8
Two year average	7.5	8.8	10.0	10.3	10.9	10.1	9.7
Three year average	7.1	8.3	9.2	10.1	10.7	10.2	10.3
2) Percent Uninsured Children (<18)							
One year average	4.5	4.7	5.2	7.1	7.6	4.1	8.8
Two year average	4.1	4.6	4.9	6.2	7.4	5.9	6.5
Three year average	4.6	4.3	4.8	5.7	6.7	6.3	6.9
3) Percent Uninsured Islanders (<65)							
One year average	9.0	11.3	11.7	11.7	13.0	9.7	12.2
Two year average	8.9	10.2	11.5	11.7	12.3	11.4	10.2
Three year average	8.4	9.7	10.7	11.6	12.1	11.5	11.6
4) Percent of Rhode Islanders with Employer Based Coverage (<65)	73.9	69.3	70.4	67.2	67.6	69.3	68.2
5) Percent of Rhode Islanders with Medicaid Coverage (<65)	13.9	16.5	15.8	17.4	16.9	19.7	15.6

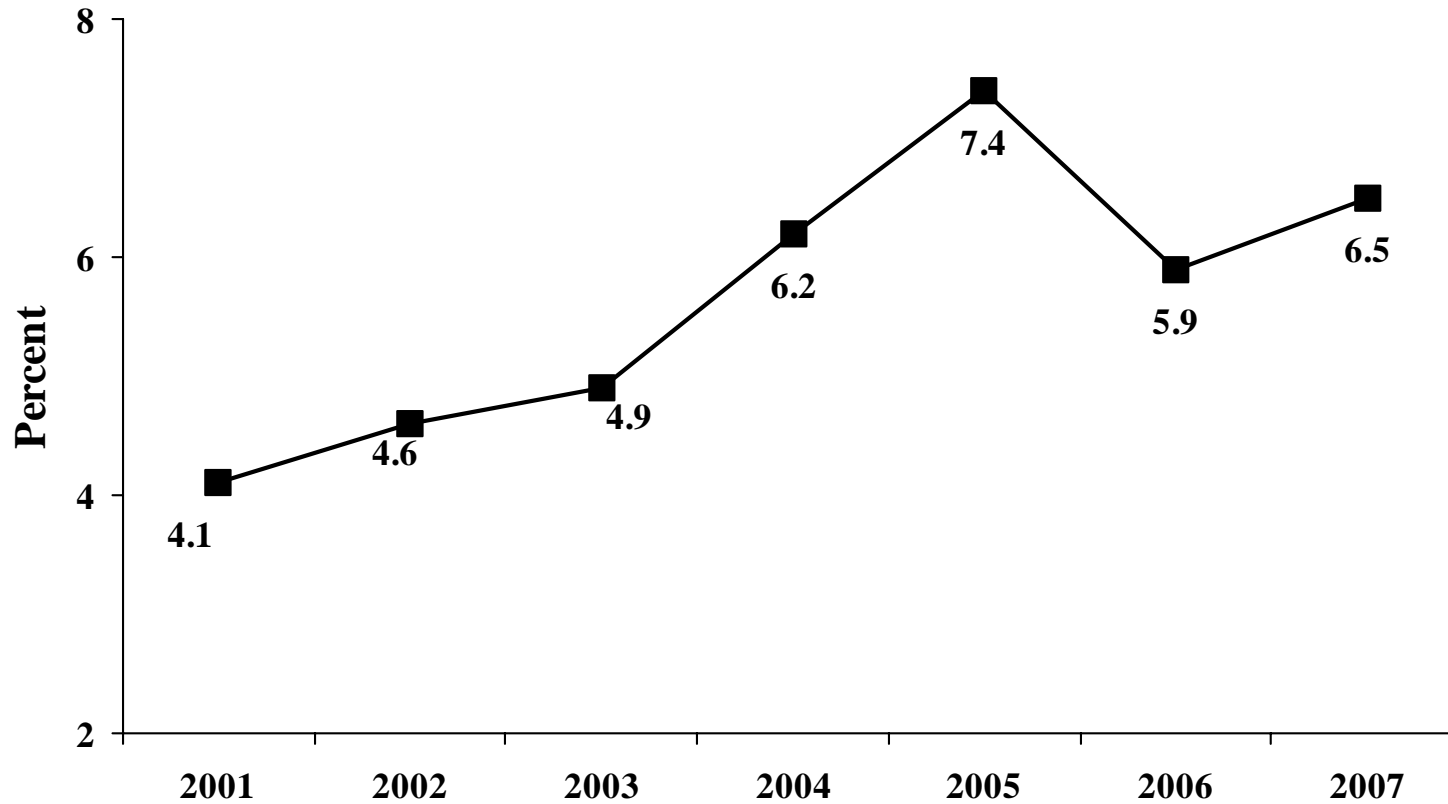
Data Source: Census, Current Population Survey, 2001-2007, Annual Social and Economic Supplements (ASES) – September 2008

# Figure 1: Percent of Uninsured Rhode Islanders All Ages – Two Year Average



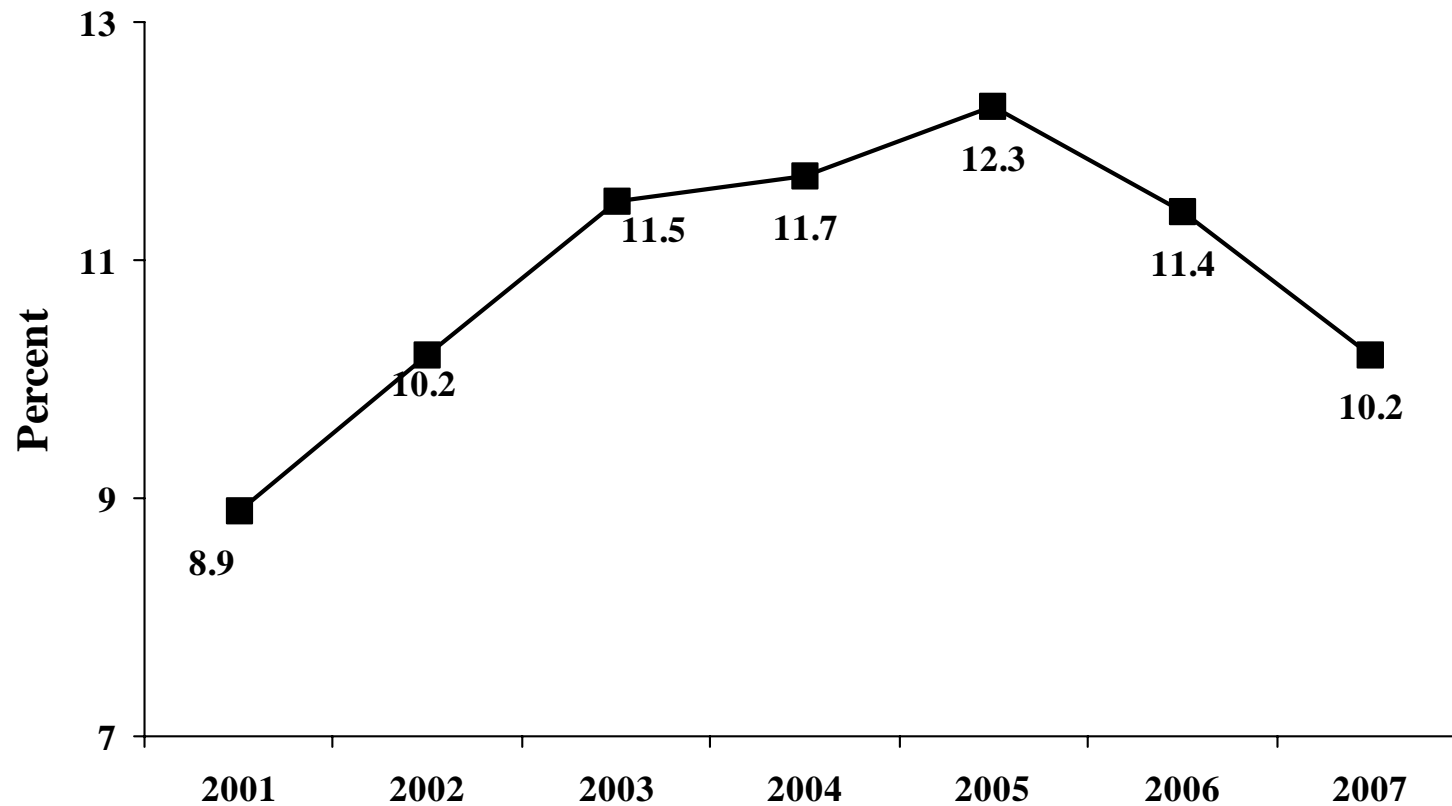
Data Source: Census, Current Population Survey, September Estimate, 2001-2007

**Figure 2: Percent of Uninsured RI Children (<18)  
Two Year Average**



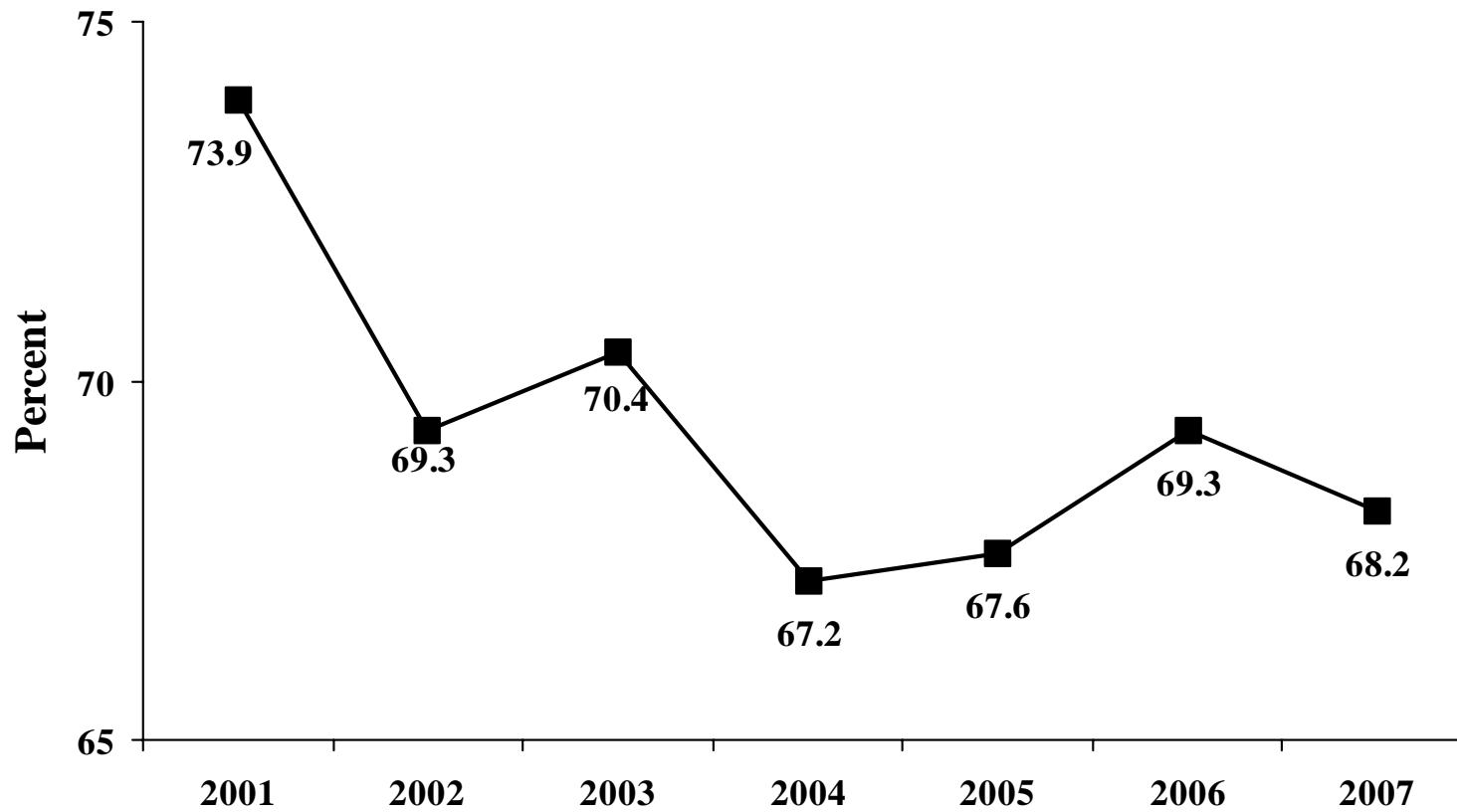
Data Source: Census, Current Population Survey, September Estimate, 2001-2007

### Figure 3: Percent of Uninsured Rhode Islanders <65 Two Year Average



Data Source: Census, Current Population Survey, September Estimate, 2001-2007

**Figure 4: Percent of Rhode Islanders  
with Employer Based Coverage (<65)  
Two Year Average**



Data Source: Census, Current Population Survey, September Estimate, 2001-2007

<b>Section IIa: List of Health Indicators for Access to Health Care for Rhode Islanders by Health Coverage*</b> <b>CY 1996 – 2007: BRFSS</b>	
1) Percent of Rhode Islanders Who Couldn't See Doctor Due to Cost (18-64)	
2) Percent of Rhode Islanders Who Had a Routine Check-up in Past Year (18-64)	

Data Source: Behavioral Risk Factor Surveillance System (BRFSS), RI Department of Health 1996-2007

Technical Notes: Health Care Coverage is measured at the time of interview (point in time)

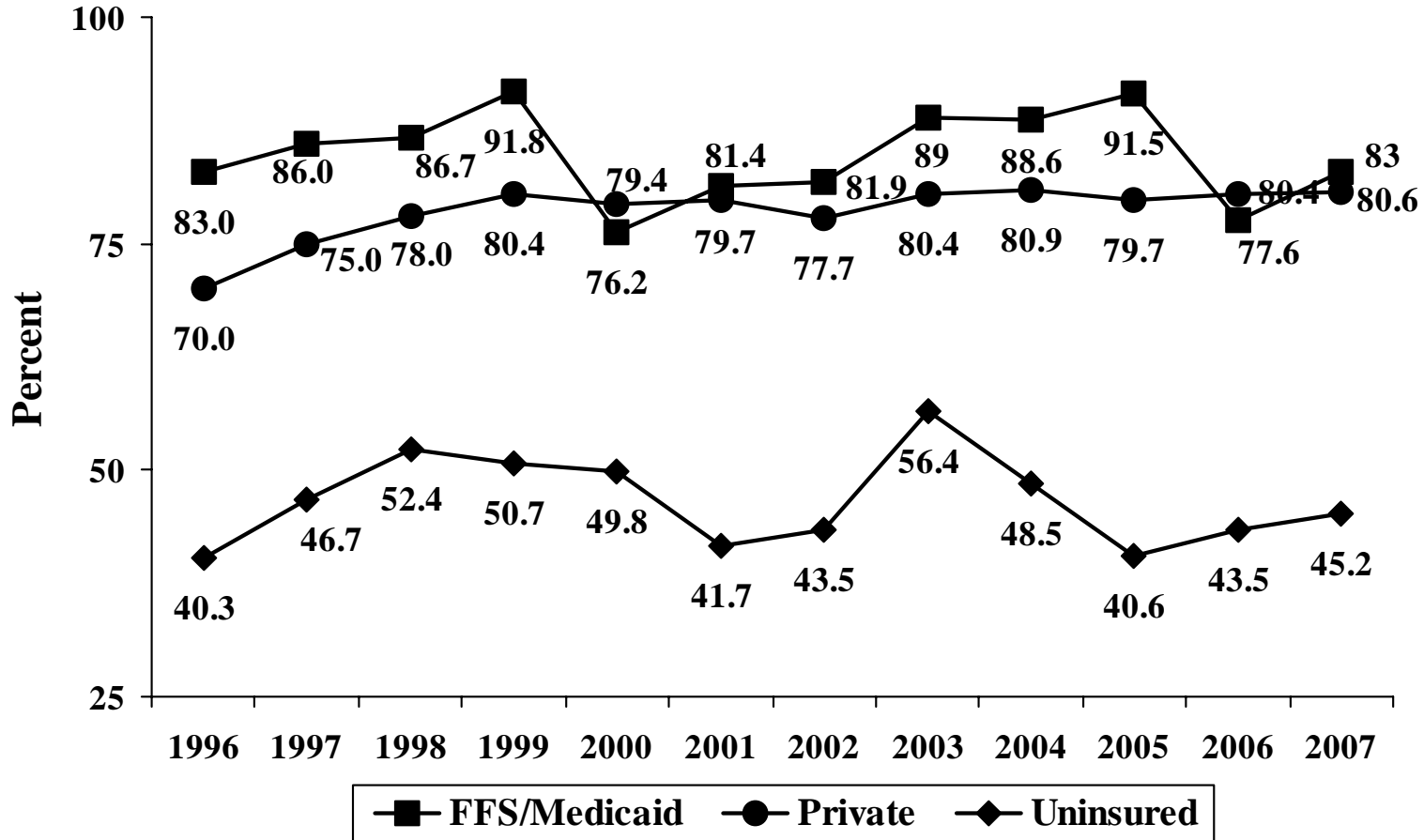
**Section IIb: Health Indicator Data Table for Access to Health Care by Health Coverage 1996-2007**

	1996	1997	1998	1999	2000	2001	2002	2003	2004	2005	2006	2007
<b>1) Percent of Rhode Islanders Who Couldn't See Doctor Due to Cost in Past Year (18-64)</b>												
Fee-For-Service Medicaid *	12.1	17.3	12.5	11.2	9.6	11.7	NA	9.3	15.3	16.5	14.3	14.1
Private	5.9	4.8	4.3	4.4	3.9	4.2	NA	5.4	4.9	5.5	5.2	5.1
RIte Care	NA	NA	NA	NA	NA	NA	NA	9.8	11.6	5.3	9.2	11.5
Uninsured	40.1	40.3	40.8	36.7	40.7	31.9	NA	49.4	42.8	47.7	49.5	46.9
<b>2) Percent of Rhode Islanders Who Had a Routine Check-up in Past Year (18-64)</b>												
Fee-For-Service Medicaid *	83.0	86.0	86.7	91.8	76.2	81.4	81.9	89.0	88.6	91.5	77.6	83.0
Private	70.0	75.0	78.0	80.4	79.4	79.7	77.7	80.4	80.9	79.7	80.4	80.6
RIte Care	NA	NA	NA	NA	NA	NA	72.8	82.6	85.1	84.8	87.0	78.7
Uninsured	40.3	46.7	52.4	50.7	49.8	41.7	43.5	56.4	48.5	40.6	43.5	45.2

Data Source: Behavioral Risk Factor Surveillance System (BRFSS), RI Department of Health, CY 1996-2007

\* Note: Number of Fee-For-Service Medicaid Respondents in sample is approximately 100 each year

**Figure 5: Percent of Rhode Islanders (18-64) Who Had a Routine Check-Up in Past Year by Health Insurance Coverage**



Data Source: Behavioral Risk Factor Surveillance System (BRFSS), RI Department of Health, 1996-2007

<b>Section IIIa: List of Health Indicators for Hospitalizations to Rhode Islanders &lt;65 years old by Health Coverage CY 2001 – 2007: Hospital Discharge</b>	
1) Total Number of Hospitalizations <65	
2) Total Number of Hospitalizations to Children < 18	
3) Total Number of Hospitalizations to Adults 18-64	
4) Percent of Hospitalizations to Females	
5) Percent of Hospitalizations to Minorities	
6) Percent of Emergency Hospital Admissions	
7) Percent of Hospital Admissions for Newborn Deliveries	
8) Percent of Hospitalizations with Primary Diagnosis of Mental Disorder for Children <18	
9) Percent of Hospitalizations with Primary Diagnosis of Mental Disorder for Adults 18-64	
10) Rate of Hospitalizations for Ambulatory Care Sensitive Conditions (ACS) for Children <18	
11) Rate of Hospitalizations for Ambulatory Care Sensitive Conditions (ACS) for Adults 18-64	
12) Percent of Hospitalizations - >7 Days for Children <18	
13) Percent of Hospitalizations - >7 Days for Adults 18-64	
14) Percent of Hospitalizations - >30 Days for Children <18	
15) Percent of Hospitalizations - >30 Days for Adults 18-64	
16) Average Length of Stay (LOS) for Hospitalizations in days for Children <18	
17) Average Length of Stay (LOS) for Hospitalizations in days for Adults 18-64	

Data Source: Rhode Island Hospital Discharge Data Set, RI Department of Health, CY 2001-2007

Technical Notes: Statewide overnight hospitalizations for RI acute care hospitals. Includes deliveries and births.

**Section IIIb: Health Indicator Data Table for Hospitalizations to Rhode Islanders <65 Years Old by Insurance Coverage CY 2001-2007**

	<b>2001</b>	<b>2002</b>	<b>2003</b>	<b>2004</b>	<b>2005</b>	<b>2006</b>	<b>2007</b>
<b>1) Total Number of RI Hospitalizations &lt;65</b>	84,176	86,518	88,367	89,022	89,679	90,485	92,352
Fee-For-Service Medicaid	8,911	8,815	9,551	9,840	10,352	10,351	9,939
RIte Care	13,768	14,352	15,295	14,740	15,929	16,394	16,274
Private Insurance	42,149	45,699	49,260	48,667	47,681	46,930	47,697
Uninsured	4,274	4,523	4,065	4,461	4,361	4,726	5,210
<b>2) Total Number of Hospitalizations to Children &lt;18</b>	22,494	23,017	23,463	22,864	22,681	22,016	22,214
Fee-For-Service Medicaid	2,002	1,863	1,966	1,745	1,682	1,586	1,612
RIte Care	7,085	7,142	7,780	7,547	8,060	8,192	8,417
Private Insurance	10,436	11,579	13,067	12,633	12,327	11,505	11,289
Uninsured	612	537	225	195	212	180	228
<b>3) Total Number of Hospitalizations to Adults 18-64</b>	61,682	63,501	64,904	66,158	66,998	68,469	70,138
Fee-For-Service Medicaid	6,909	6,960	7,589	8,095	8,670	8,765	8,327
RIte Care	6,683	7,210	7,516	7,193	7,869	8,202	7,857
Private Insurance	31,713	34,116	36,193	36,032	35,354	34,425	36,408
Uninsured	3,662	3,984	3,840	4,266	4,149	4,546	4,982
<b>4) Percent of Hospitalizations to Females &lt;65</b>							
Fee-For-Service Medicaid	54.9	54.8	57.3	56.5	55.8	54.4	55.0
RIte Care	69.4	69.8	70.8	69.7	70.8	70.7	70.0
Private Insurance	58.6	58.8	59.4	59.2	59.6	58.9	59.1
Uninsured	43.7	43.7	36.7	36.3	37.6	37.0	38.8

Data Source: Rhode Island Hospital Discharge Data Set, RI Department of Health, CY 2001-2007

	2001	2002	2003	2004	2005	2006	2007
<b>5) Percent of Hospitalizations to Minorities &lt;65</b>							
Fee-For-Service Medicaid	35.5	37.2	36.9	33.8	33.6	35.4	35.6
RIte Care	52.8	52.3	50.8	51.1	52.8	52.0	51.3
Private Insurance	13.3	13.2	14.0	13.9	14.3	13.9	14.5
Uninsured	32.9	32.2	32.8	34.4	35.1	34.0	34.0
<b>6) Percent of Emergency Hospital Admissions &lt;65</b>							
Fee-For-Service Medicaid	58.2	58.8	57.2	56.8	59.8	62.1	58.3
RIte Care	24.4	23.9	23.3	24.1	23.9	25.3	22.9
Private Insurance	34.8	35.4	35.3	36.1	36.5	39.1	38.8
Uninsured	63.9	67.4	81.8	82.1	82.8	83.0	83.1
<b>7) Percent of Hospital Admission for Newborn Deliveries &lt;65</b>							
Fee-For-Service Medicaid	7.1	7.5	7.1	7.0	6.9	7.5	8.3
RIte Care	29.8	30.7	31.4	30.8	30.6	29.9	30.3
Private Insurance	14.5	14.8	16.0	15.5	15.5	14.7	13.6
Uninsured	11.1	9.0	3.0	1.7	2.2	1.4	1.4
<b>8) Percent of Hospitalizations with Primary Diagnosis of Mental Disorder for Children &lt;18 *</b>							
Fee-For-Service Medicaid	17.5	13.5	21.5	22.5	21.6	10.0	9.6
RIte Care	3.2	4.2	3.5	3.9	5.8	6.1	6.4
Private Insurance	8.0	8.8	8.0	8.0	7.5	6.9	7.8
Uninsured	1.3	1.4	3.5	5.6	8.5	5.6	5.3

Data Source: Rhode Island Hospital Discharge Data Set, RI Department of Health, CY 2001-2007

	2001	2002	2003	2004	2005	2006	2007
<b>9) Percent of Hospitalizations with Primary Diagnosis of Mental Disorder for Adults 18-64 *</b>							
Fee-For-Service Medicaid	32.8	31.8	34.4	36.5	34.5	33.4	29.2
RIte Care	6.4	5.9	6.0	4.8	6.1	7.6	7.7
Private Insurance	11.9	11.0	9.4	9.0	9.3	9.8	11.2
Uninsured	15.9	17.1	16.3	13.6	10.4	15.2	13.8
<b>10) Percent of Hospitalizations for Ambulatory Care Sensitive Conditions (ACS) for Children &lt;18**</b>							
Fee-For-Service Medicaid	11.5	12.2	11.1	9.4	8.9	9.3	10.0
RIte Care	11.5	9.5	10.7	10.3	10.3	10.0	8.8
Private Insurance	8.9	8.6	8.9	8.8	8.5	8.7	8.0
Uninsured	6.7	5.6	13.3	14.9	17.5	17.8	21.9
<b>11) Percent of Hospitalizations for Ambulatory Care Sensitive Conditions (ACS) for Adults 18-64 **</b>							
Fee-For-Service Medicaid	14.0	14.1	14.3	13.9	14.6	13.3	14.2
RIte Care	4.8	5.0	4.9	4.6	5.0	4.8	3.7
Private Insurance	8.1	8.1	8.3	8.0	7.8	7.4	7.6
Uninsured	14.2	14.2	18.0	15.7	16.2	16.8	16.9

Data Source: Rhode Island Hospital Discharge Data Set, RI Department of Health, CY 2001-2007

\* Note: Mental Disorder – ICD9 codes 290-319 – Percent of hospitalizations for mental disorders decreased for FFS Medicaid and increased for RIte Care due to enrollment of Children with Special Health Care Needs into RIte Care

\*\* Note: ACS Conditions include asthma, pneumonia, diabetes, gastroenteritis, hypertension, COPD, CHF, angina, PID, ENT, hypoglycemia

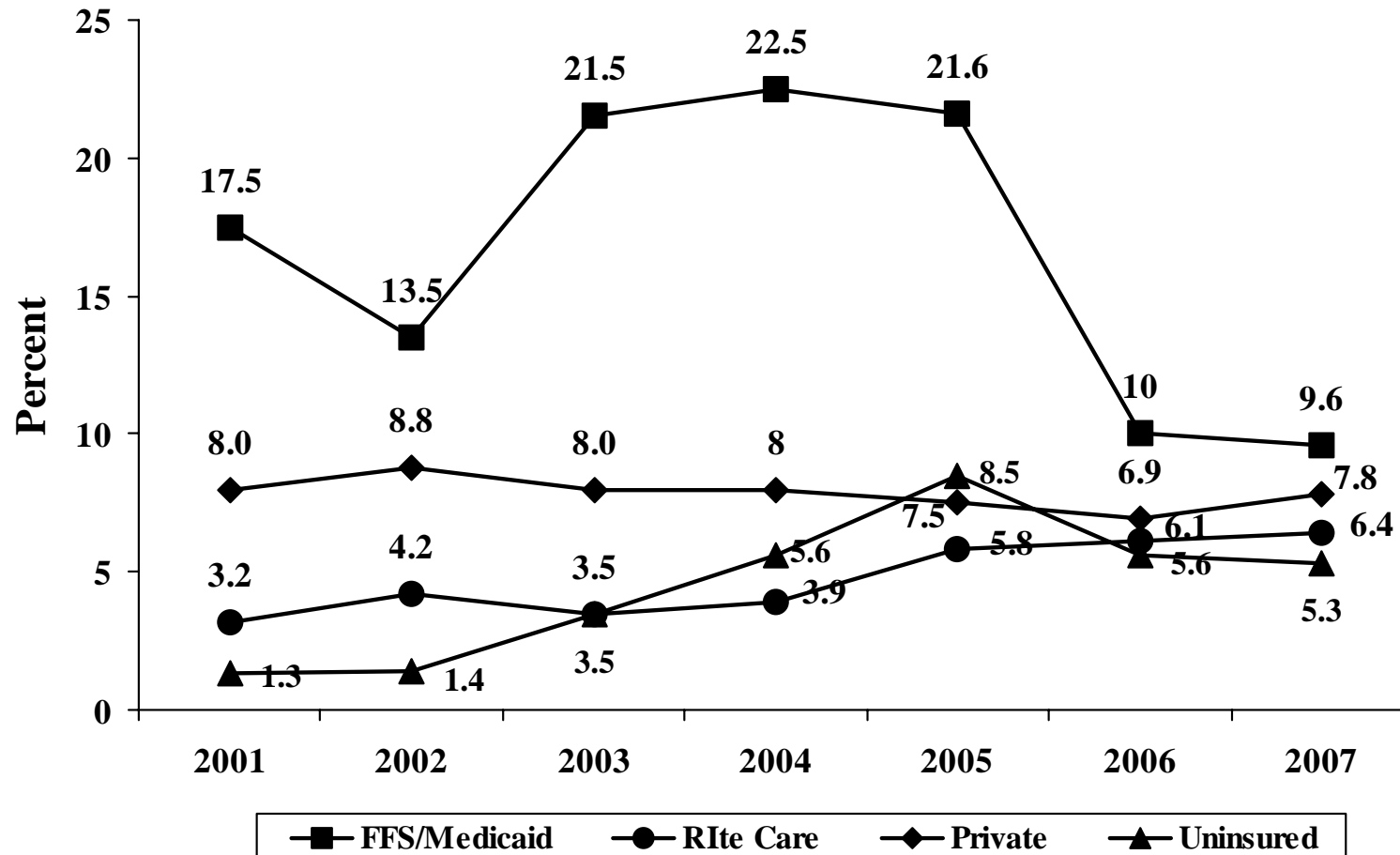
	2001	2002	2003	2004	2005	2006	2007
<b>12) Percent of Hospitalizations - &gt;7 Days for Children &lt;18</b>							
Fee-For-Service Medicaid	28.9	26.8	31.5	32.7	33.5	28.8	28.0
RIte Care	6.3	6.6	6.6	7.4	7.9	8.9	9.3
Private Insurance	8.1	8.8	9.3	9.3	9.8	9.1	10.2
Uninsured	6.2	7.3	4.4	4.1	6.1	3.9	6.6
<b>13) Percent of Hospitalizations - &gt;7 Days for Adults 18-64</b>							
Fee-For-Service Medicaid	25.4	24.4	25.2	25.5	25.2	24.1	24.0
RIte Care	5.8	4.8	5.0	4.7	4.9	5.0	4.2
Private Insurance	10.9	10.7	11.1	10.6	10.6	10.7	10.9
Uninsured	12.8	12.9	15.2	13.0	12.5	13.1	13.5
<b>14) Percent of Hospitalizations - &gt;30 Days for Children &lt;18</b>							
Fee-For-Service Medicaid	8.9	7.3	7.2	7.3	7.4	8.2	6.7
RIte Care	1.3	1.5	1.2	1.6	2.0	1.7	1.8
Private Insurance	1.2	1.3	1.6	1.5	1.7	1.4	1.7
Uninsured	1.0	1.5	0.0	0.0	0.5	0.6	0.4
<b>15) Percent of Hospitalizations - &gt;30 Days for Adults 18-64</b>							
Fee-For-Service Medicaid	2.7	2.7	2.4	2.4	2.7	2.5	2.4
RIte Care	0.4	0.3	0.3	0.2	0.2	0.3	0.2
Private Insurance	0.7	0.7	0.8	0.7	0.7	0.7	0.7
Uninsured	0.9	0.6	1.0	1.2	0.9	1.1	1.1

Data Source: Rhode Island Hospital Discharge Data Set, RI Department of Health, CY 2001-2007

	2001	2002	2003	2004	2005	2006	2007
<b>16) Average Length of Stay (LOS) in Days for Hospitalizations for Children &lt;18</b>							
Fee-For-Service Medicaid	12.6	11.2	11.3	10.9	11.3	11.5	12.1
RItE Care	3.8	4.1	3.8	4.3	4.5	4.4	4.5
Private Insurance	4.1	4.2	4.5	4.5	4.6	4.3	4.5
Uninsured	3.6	3.8	2.8	2.2	3.3	2.7	2.8
<b>17) Average Length of Stay (LOS) in Days for Hospitalizations for Adults 18-64</b>							
Fee-For-Service Medicaid	7.0	7.1	6.9	7.0	7.1	6.8	7.0
RItE Care	3.4	3.3	3.3	3.3	3.3	3.3	3.3
Private Insurance	4.2	4.2	4.3	4.1	4.2	4.2	4.2
Uninsured	4.4	4.3	4.7	4.3	4.2	4.4	4.4

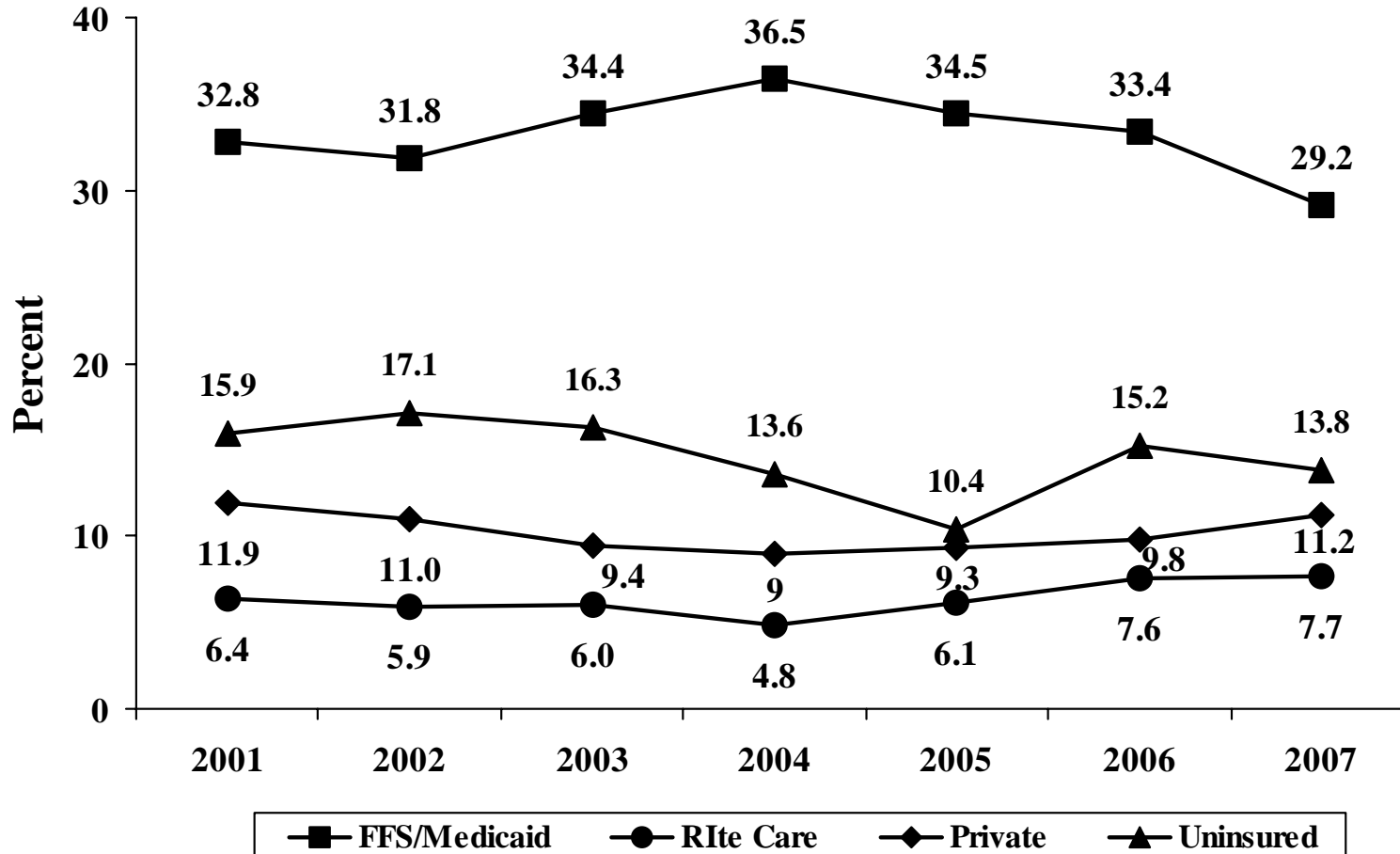
Data Source: Rhode Island Hospital Discharge Data Set, RI Department of Health, CY 2001-2007

## Figure 6: Percent of RI Hospitalizations with Primary Diagnosis of Mental Disorder for Children <18 by Health Insurance Coverage



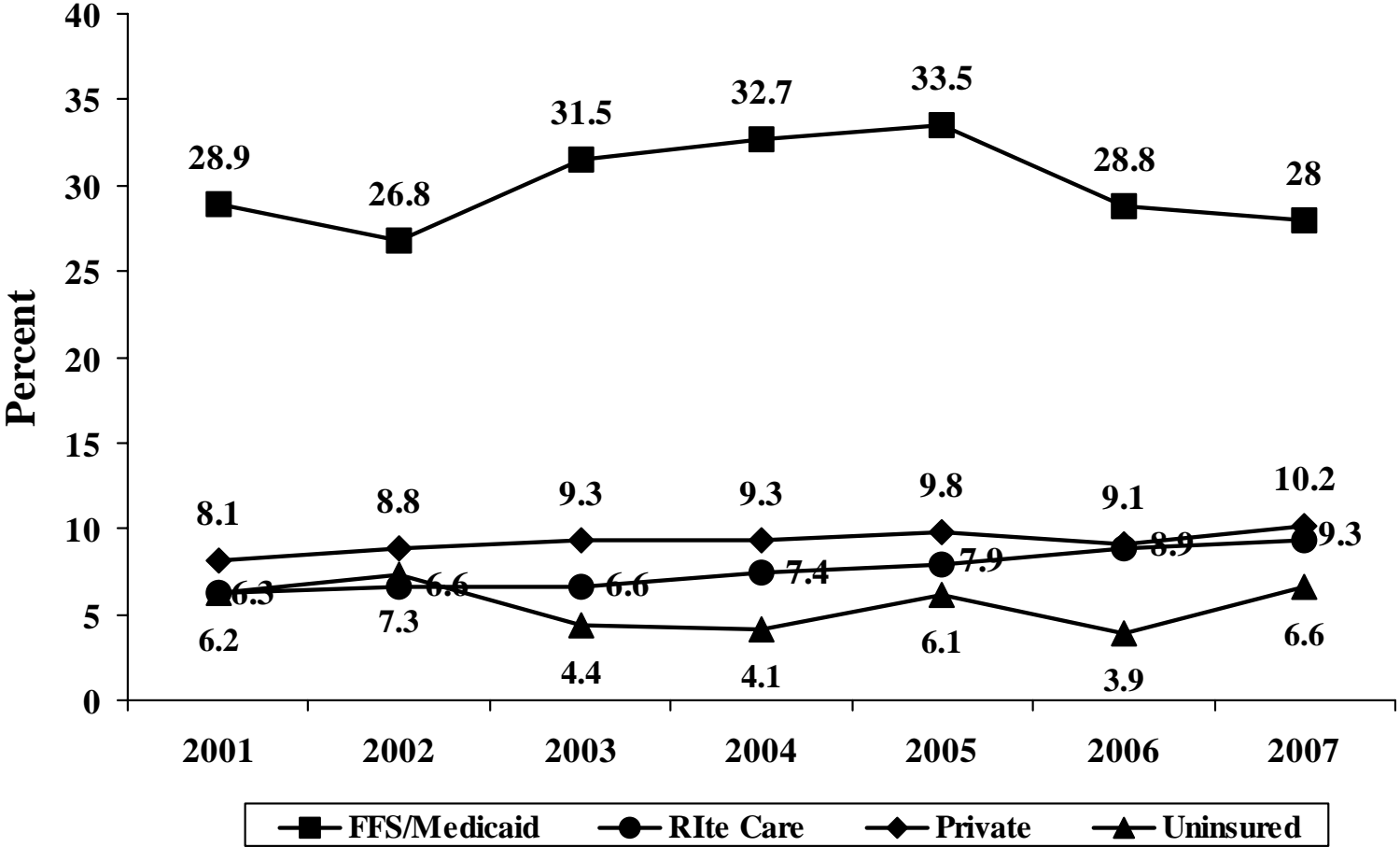
Data Source: Rhode Island Hospital Discharge Data Set, RI Department of Health, CY 2001-2007  
Mental Disorder – ICD9 Codes 290-319

**Figure 7: Percent of RI Hospitalizations with Primary Diagnosis of Mental Disorder for Adults 18-64 by Health Insurance Coverage**



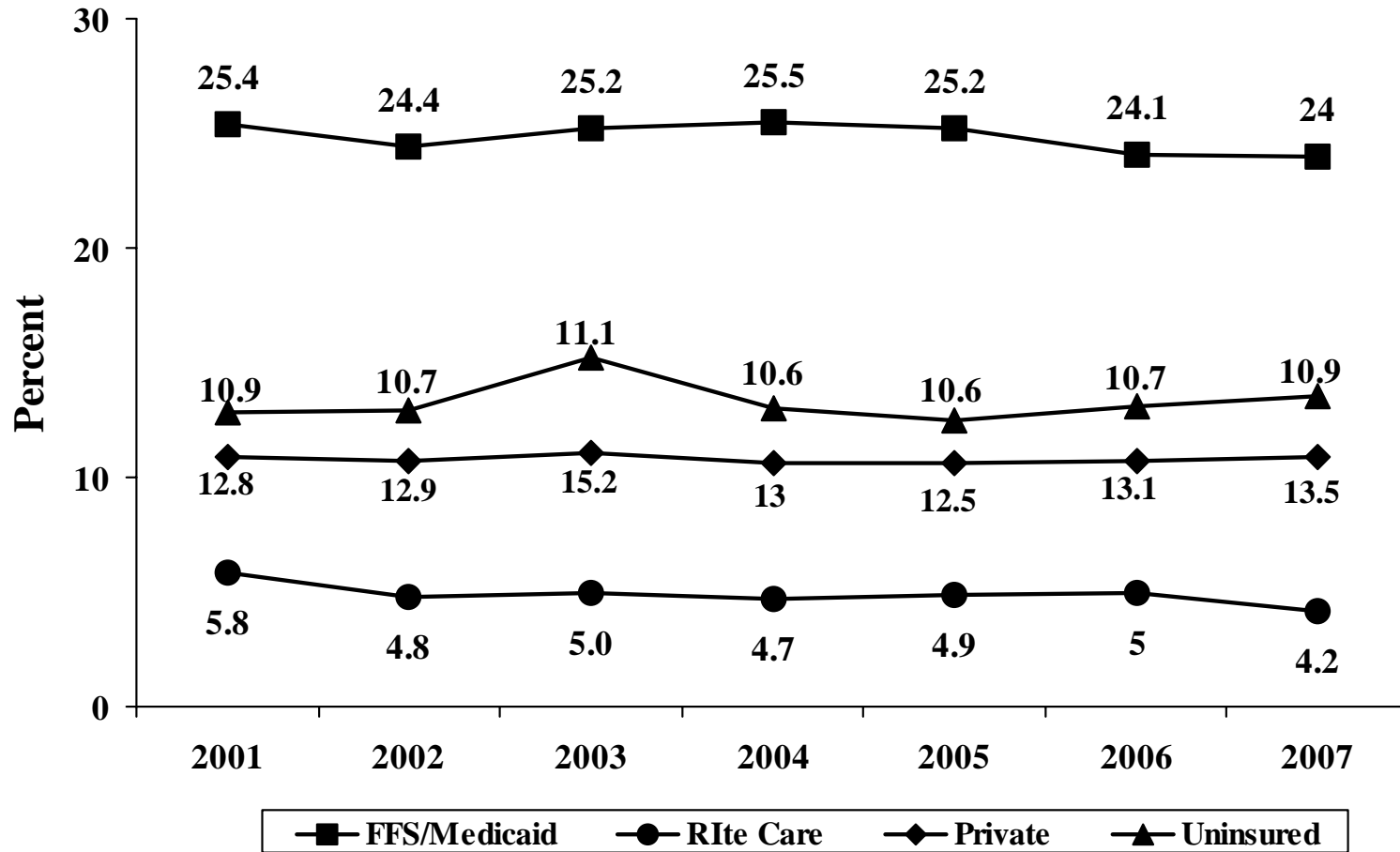
Data Source: Rhode Island Hospital Discharge Data Set, RI Department of Health, CY 2001-2007  
Mental Disorder – ICD9 Codes 290-319

**Figure 8: Percent of Hospitalizations >7 Days for Children <18 by Health Insurance Coverage**



Data Source: Rhode Island Hospital Discharge Data Set, RI Department of Health, CY 2001-2007

### Figure 9: Percent of Hospitalizations >7 Days for Adults 18-64 by Health Insurance Coverage



Data Source: Rhode Island Hospital Discharge Data Set, RI Department of Health, CY 2001-2007

Section IVa: List of Health Indicators for Prenatal Care and Birth Outcomes by Health Coverage CY 1995-2007: Vital Statistics Birth & Death Files	
1) Total Number of RI Resident Births	
2) Total Number of Teen Births (<20)	
3) Percent of Total Births to Teenagers (<20)	
4) Percent Second Time Births to Teen Mothers	
5) Percent of Births to Women ( $\geq$ 35)	
6) Percent of Births to Hispanic Women	
7) Percent of Births to Black Women	
8) Percent of Births to Women with High Parity (>3)	
9) Percent of Pregnant Women Who Smoke Cigarettes	
10) Percent of Women with Short Interbirth Interval (<18 months)	
11) Percent of Cesarean Births	
12) Percent of Low Birthweight Infants (<2500 grams)	
13) Percent of Very Low Birthweight Infants (<1500 grams)	
14) Percent of Premature Births (<37 weeks)	
15) Percent of Multiple Births	
16) Neonatal Mortality (<28 days)	
17) Postneonatal Mortality (28-365 days)	
18) Infant Mortality (<1 year)	

Data Source: RI Medicaid Research & Evaluation Project, RI DHS, Vital Statistics Birth File, RI Department of Health

**Section IVb: Health Indicator Data Table for Prenatal Care and Birth Outcomes by Health Coverage CY 1995-2007**

	1995	1996	1997	1998	1999	2000	2001	2002	2003	2004	2005	2006	2007
<b>1) Total Number of RI Resident Births</b>	12,422	12,300	12,076	12,201	11,958	12,065	12,200	12,441	12,690	12,309	12,263	11,978	12,016
RIte Care	3,510	3,971	3,619	3,618	3,554	4,271	4,533	4,543	4,700	5,478	5,798	5,530	5,657
Private	8,251	7,962	8,049	8,208	8,042	7,577	7,453	7,620	7,769	6,658	6,237	6,313	6,179
<b>2) Total Number of Teen Births (&lt;20)</b>	1,267	1,299	1,322	1,312	1,211	1,255	1,229	1,160	1,077	1,159	1,122	1,123	1,190
RIte Care	721	790	718	713	683	839	870	803	781	932	943	903	982
Private	430	453	509	529	460	368	328	357	266	206	155	190	177
<b>3) Percent of Total Births to Teenagers (&lt;20)</b>													
RIte Care	20.8	19.9	19.8	19.7	19.2	19.6	19.2	17.7	16.6	17.0	16.3	16.3	17.4
Private	5.2	5.7	6.3	6.4	5.7	4.9	4.4	4.7	3.5	3.1	2.5	3.0	2.9
<b>4) Percent Repeat Births to Teen Mothers (&lt;20)</b>													
RIte Care	23.3	25.8	23.0	24.2	24.9	24.1	22.0	22.6	19.5	20.1	19.1	22.2	18.7
Private	12.8	12.4	15.4	12.6	15.2	11.7	14.7	15.4	9.9	15.8	5.4	10.1	8.0
<b>5) Percent of Births to Women (&gt;=35)</b>													
RIte Care	7.1	7.2	6.2	7.4	7.2	7.2	7.7	8.0	8.4	9.4	10.0	8.8	7.7
Private	16.6	17.5	18.2	19.1	19.4	20.5	21.9	23.1	24.3	24.9	26.3	26.6	26.8

Data Table: RI Medicaid Research and Evaluation Project, DHS, Vital Statistics Birth File, RI Department of Health, CY 1995-2007

	1995	1996	1997	1998	1999	2000	2001	2002	2003	2004	2005	2006	2007
<b>6) Percent of Births to Hispanic Women</b>													
RItE Care	25.5	25.0	29.0	30.0	31.0	34.7	34.4	34.5	36.1	34.0	34.0	36.5	35.5
Private	5.8	7.3	7.8	8.1	8.5	7.5	7.4	8.5	8.8	7.1	6.7	7.4	8.0
<b>7) Percent of Births to Black Women</b>													
RItE Care	11.6	12.4	11.0	12.1	11.8	14.3	14.3	13.8	14.5	13.1	14.3	13.7	14.2
Private	4.3	4.3	5.1	4.8	5.0	5.0	4.5	4.9	5.3	4.6	4.0	5.0	5.0
<b>8) Percent of Births to Women with High Parity (=&gt;3 children)</b>													
RItE Care	11.9	12.1	11.5	11.9	12.7	12.7	12.3	12.7	13.1	12.0	11.6	12.5	12.1
Private	5.4	5.8	6.1	6.7	6.4	6.2	5.9	6.2	6.2	6.0	6.2	6.0	5.7
<b>9) Percent of Pregnant Women Who Smoke Cigarettes</b>													
RItE Care	29.2	27.0	25.6	24.3	23.1	24.1	23.0	20.6	20.2	18.4	16.3	17.9	18.7
Private	10.9	10.9	11.4	10.9	9.5	9.1	8.2	7.1	6.2	5.4	5.1	4.5	4.4
<b>10) Percent of Women with Short Interbirth Interval (&lt;18 months)</b>													
RItE Care	30.0	28.6	29.8	30.7	28.9	29.7	30.3	31.3	27.9	27.2	27.3	28.3	28.8
Private	28.4	27.2	26.6	27.5	28.0	27.5	28.7	28.2	27.0	30.7	29.8	29.3	28.6

Data Table: RI Medicaid Research and Evaluation Project, DHS, Vital Statistics Birth File, RI Department of Health, 1995-2007

	1995	1996	1997	1998	1999	2000	2001	2002	2003	2004	2005	2006	2007
<b>11) Percent of Cesarean Births</b>													
Rlte Care	18.1	17.0	16.3	19.3	19.1	20.6	22.2	24.0	24.6	26.3	26.7	27.9	29.2
Private	19.9	19.9	21.2	21.3	22.4	24.4	26.6	29.2	31.9	31.5	33.6	34.1	35.5
<b>12) Percent of Low Birthweight Infants (&lt;2500 grams)</b>													
Rlte Care	8.2	8.2	8.3	8.8	8.1	8.2	8.5	8.4	9.6	8.8	8.0	8.7	8.8
Private	6.1	5.9	6.7	6.9	6.7	6.4	6.4	7.4	8.1	7.5	7.5	7.4	7.2
<b>13) Percent of Very Low Birthweight Infants (&lt;1500 grams)</b>													
Rlte Care	1.1	1.2	1.4	1.6	1.5	1.7	1.6	1.8	1.7	1.6	1.7	1.7	1.6
Private	1.0	0.9	1.5	1.6	1.4	1.4	1.4	1.6	1.8	1.4	1.4	1.3	1.9
<b>14) Percent of Premature Births (&lt;37 weeks)</b>													
Rlte Care	6.8	8.2	7.6	8.9	8.8	9.5	10.5	9.9	9.6	10.5	10.4	10.7	10.9
Private	6.4	6.5	7.2	8.5	8.2	9.0	8.5	9.5	10.2	9.7	10.1	10.5	10.6
<b>15) Percent of Multiple Births</b>													
Rlte Care	2.2	2.9	2.4	3.2	2.4	2.3	3.2	2.5	2.4	3.3	2.8	2.8	2.7
Private	2.9	3.0	3.4	4.3	3.9	3.5	4.1	5.0	5.2	4.6	5.2	5.2	4.4

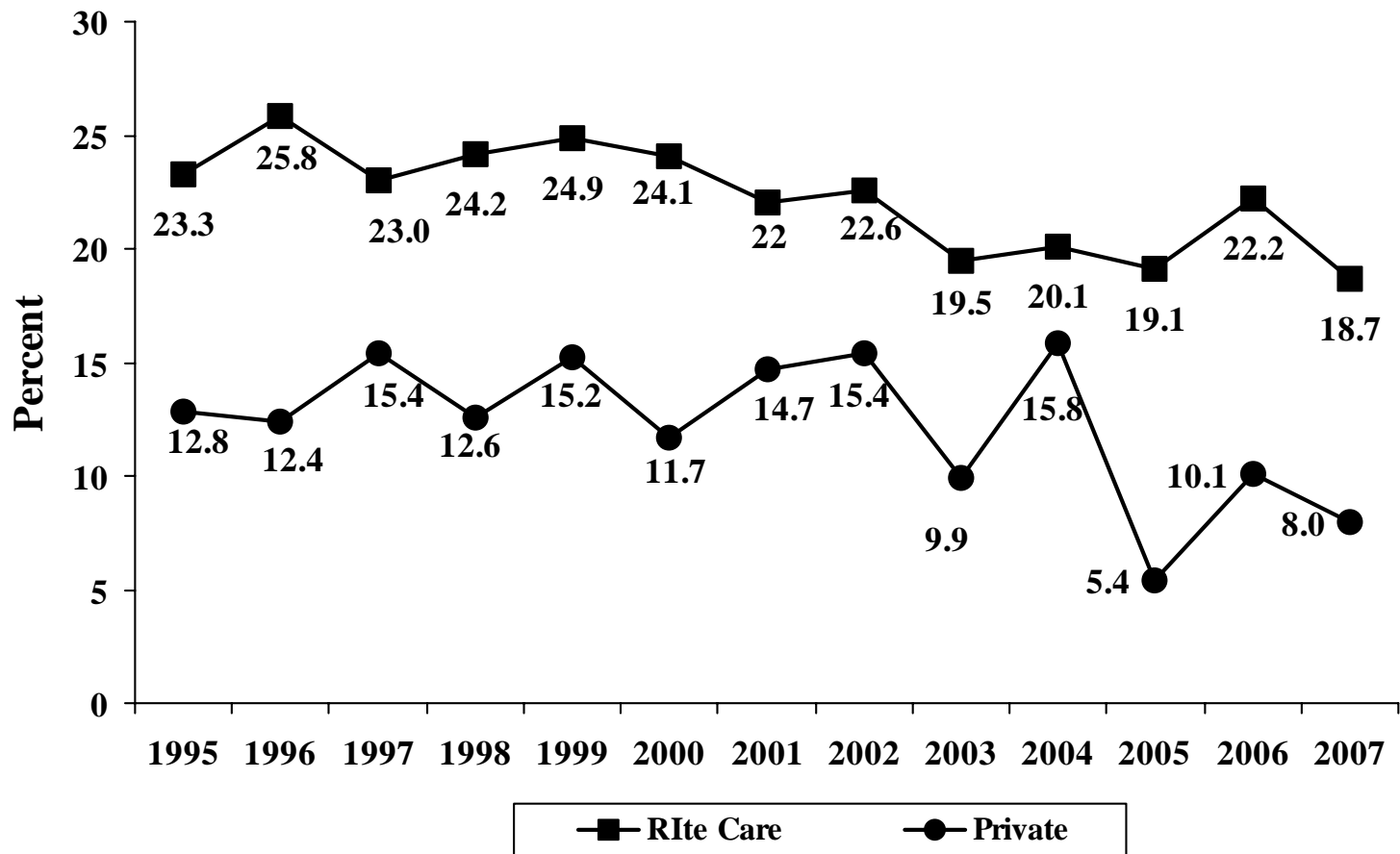
Data Table: RI Medicaid Research and Evaluation Project, DHS, Vital Statistics Birth File, RI Department of Health, 1995-2007

	1995	1996	1997	1998	1999	2000	2001	2002	2003	2004	2005	2006	2007
<b>16) Neonatal Mortality (&lt;28 days) Rate per 1000 Births</b>													
RIte Care	6.2	3.3	5.3	5.5	3.4	3.5	6.6	4.6	5.3	3.5	3.6	4.9	4.4
Private	4.6	3.0	5.1	4.1	3.1	5.0	4.0	2.9	4.0	4.2	5.0	3.8	5.5
<b>17) Postneonatal Mortality (28-365 days) Rate per 1000 Births</b>													
RIte Care	3.1	2.0	2.8	1.9	2.0	1.6	2.0	3.3	3.0	1.5	2.4	2.0	2.5
Private	0.7	0.8	0.9	1.6	0.7	1.1	0.8	1.3	0.8	1.1	0.8	0.5	1.1
<b>18) Infant Mortality (&lt;1 year) Rate per 1000 Births</b>													
RIte Care	9.4	5.3	8.0	7.5	5.3	5.2	8.6	7.9	8.3	4.9	6.0	6.9	6.9
Private	5.3	3.8	6.0	5.7	3.9	6.1	4.8	4.2	4.8	5.3	5.8	4.3	6.6

Data Table: RI Medicaid Research and Evaluation Project, DHS, Vital Statistics Birth File, RI Department of Health, 1995-2007

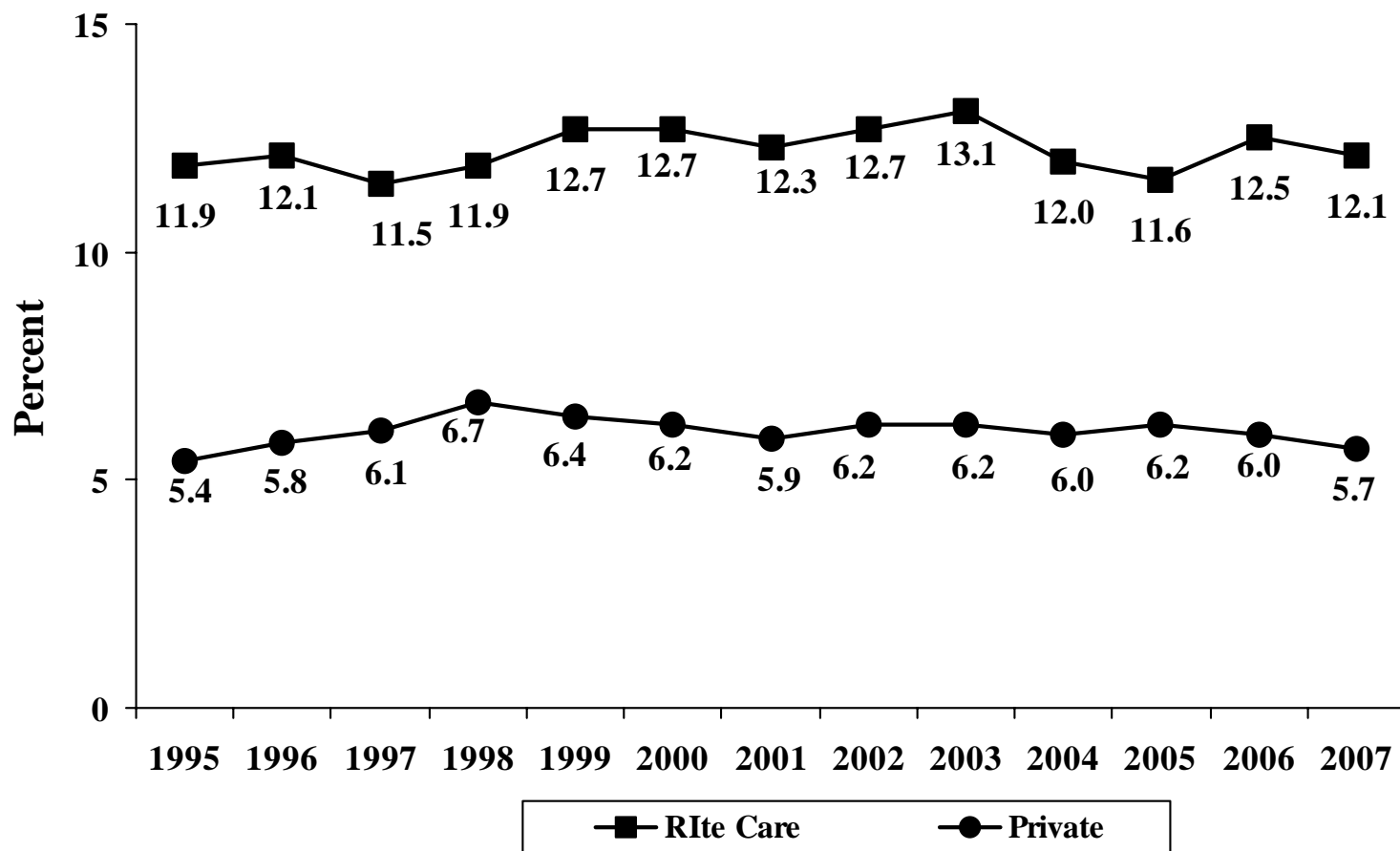
Technical Note: Infant mortality rates may fluctuate year to year due to small numbers. There are <40 deaths per year for infants on Medicaid.

**Figure 10: Percent Repeat Births to Teen Mothers (<20) by Health Insurance Coverage**



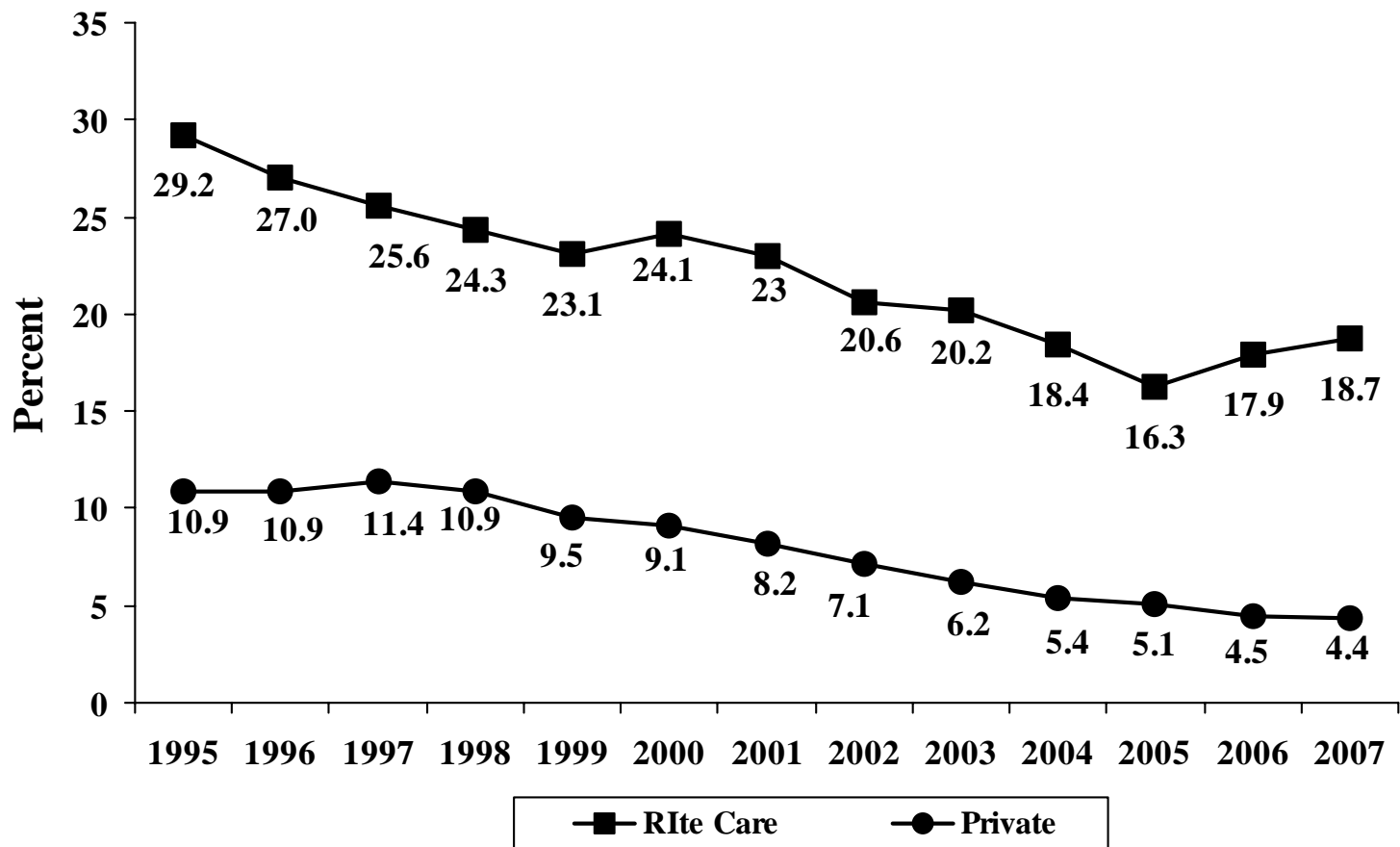
Data Source: Vital Statistics Birth File, RI Department of Health, 1995-2007

**Figure 11: Percent of Births to Women with High Parity ( $\geq 3$  Children) by Health Insurance Coverage**



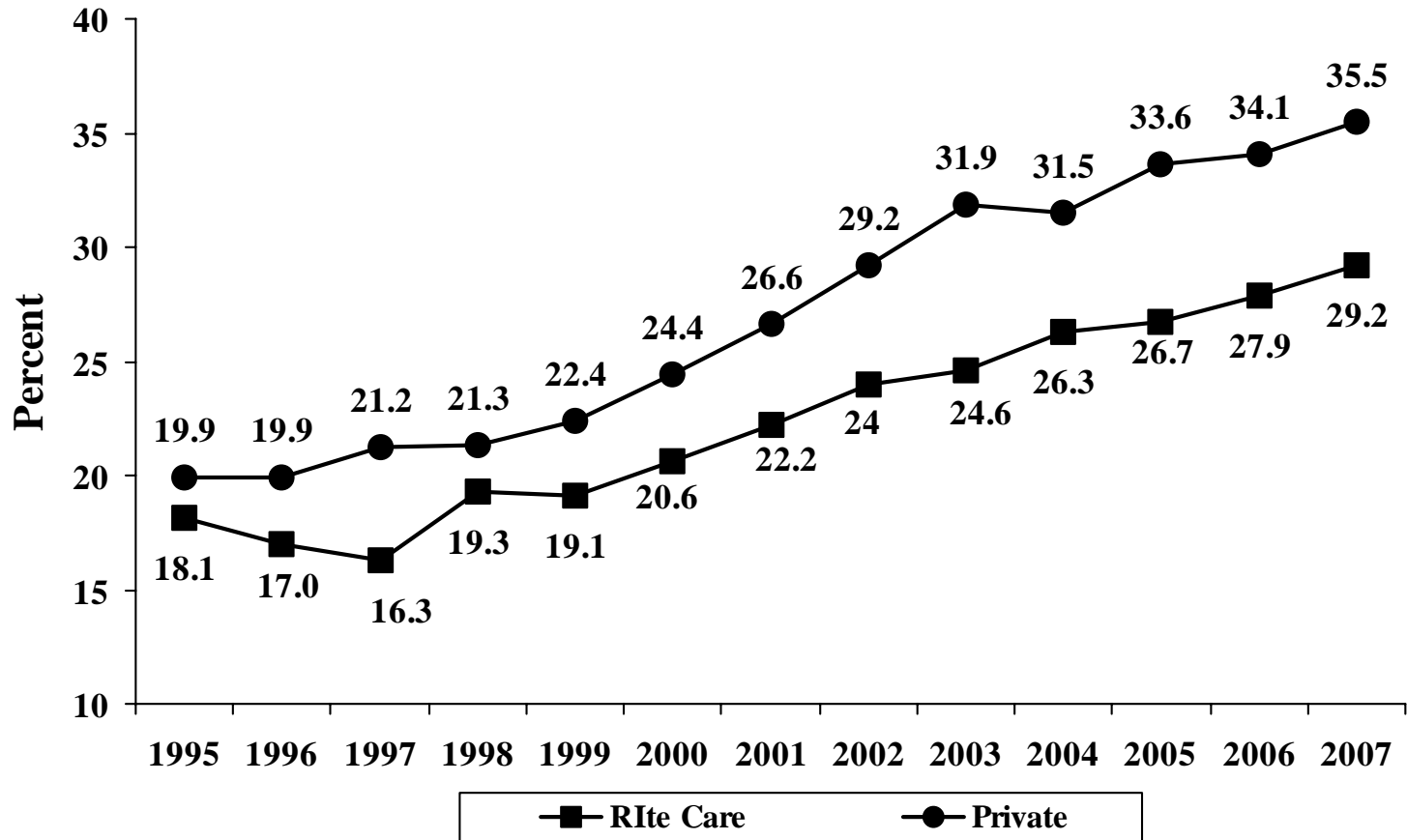
Data Source: Vital Statistics Birth File, RI Department of Health, 1995-2007

## Figure 12: Percent of Pregnant Women Who Smoke Cigarettes by Health Insurance Coverage



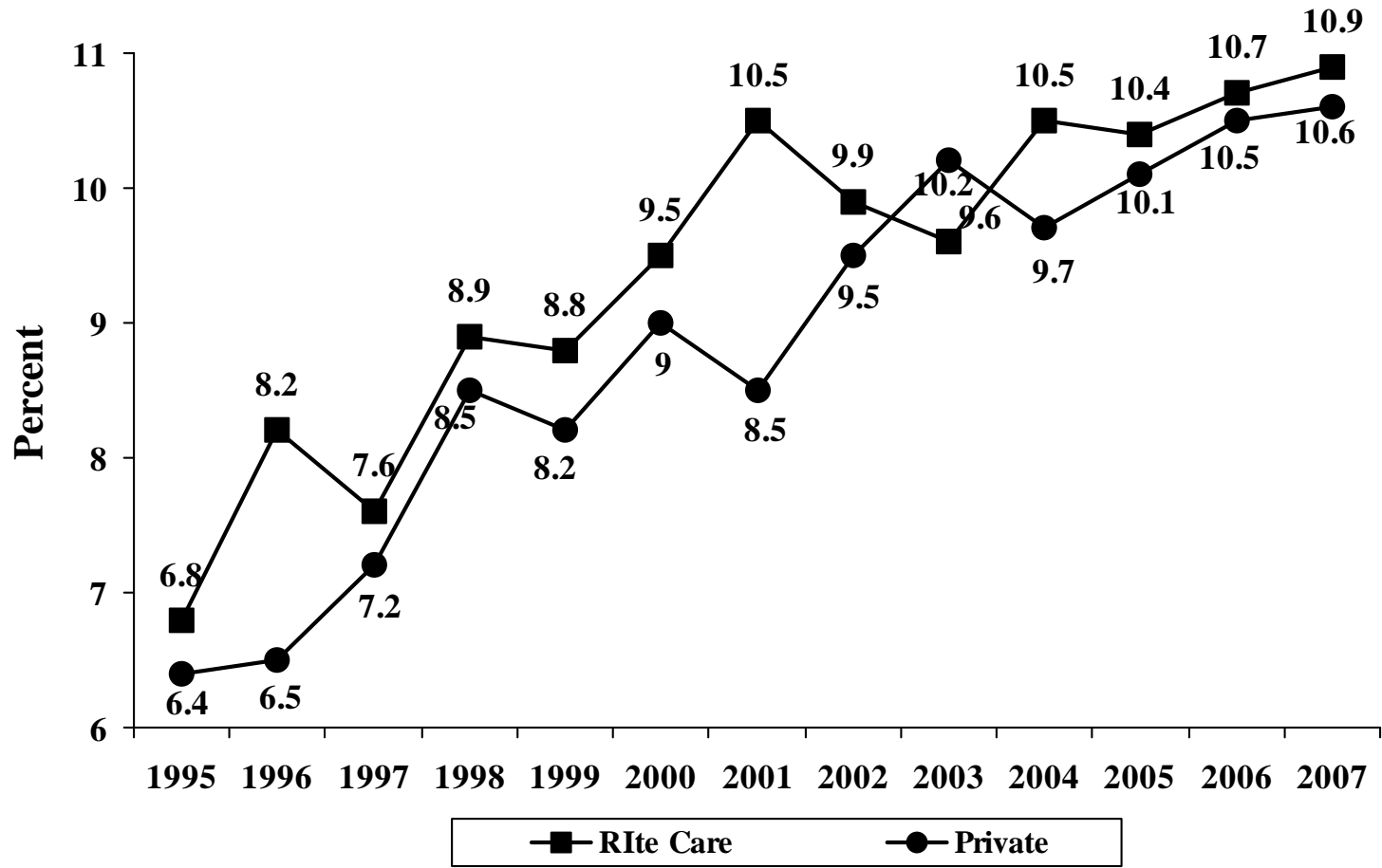
Data Source: Vital Statistics Birth File, RI Department of Health, 1995-2007

## Figure 13: Percent of Cesarean Births by Health Insurance Coverage



Data Source: Vital Statistics Birth File, RI Department of Health, 1995-2007

# Figure 14: Percent of Premature Births (<37 weeks) by Health Insurance Coverage



Data Source: Vital Statistics Birth File, RI Department of Health, 1995-2007

<b>Section Va: List of Health Indicators for Health Behaviors and Life Stress for Women During Pregnancy and Postpartum Periods by Health Coverage* CY 2002 – 2007: PRAMS</b>	
1) Percent of Women Who Ever Breastfeed	
2) Percent of Postpartum Women Using Contraception	
3) Percent of Women Who Had Postpartum Checkup	
4) Percent of Pregnant Women Who Moved During Pregnancy	
5) Percent of Pregnant Women Who were Homeless During Pregnancy	
6) Percent of Pregnant Women Who Couldn't Pay Bills During Pregnancy	
7) Percent of Pregnant Women Who Argued More With Husband/Partner During Pregnancy	
8) Percent of Women Who Have Moderate/Severe Postpartum Depression	
9) Percent of Women Who Say Pregnancy was Very Hard to Worst Time of Fife	
10) Percent of Pregnant Women Whose Pregnancies are Unplanned	

Data Source: Prenatal Risk and Monitoring System (PRAMS), RI Department of Health, 2002-2007

Technical Notes: Mail survey sent to RI mothers @ 3 months postpartum

**Section Vb: Health Indicator Data Table for Health Behaviors and Life Stress for Women During Pregnancy and Postpartum Periods by Health Coverage CY 2002 – 2007**

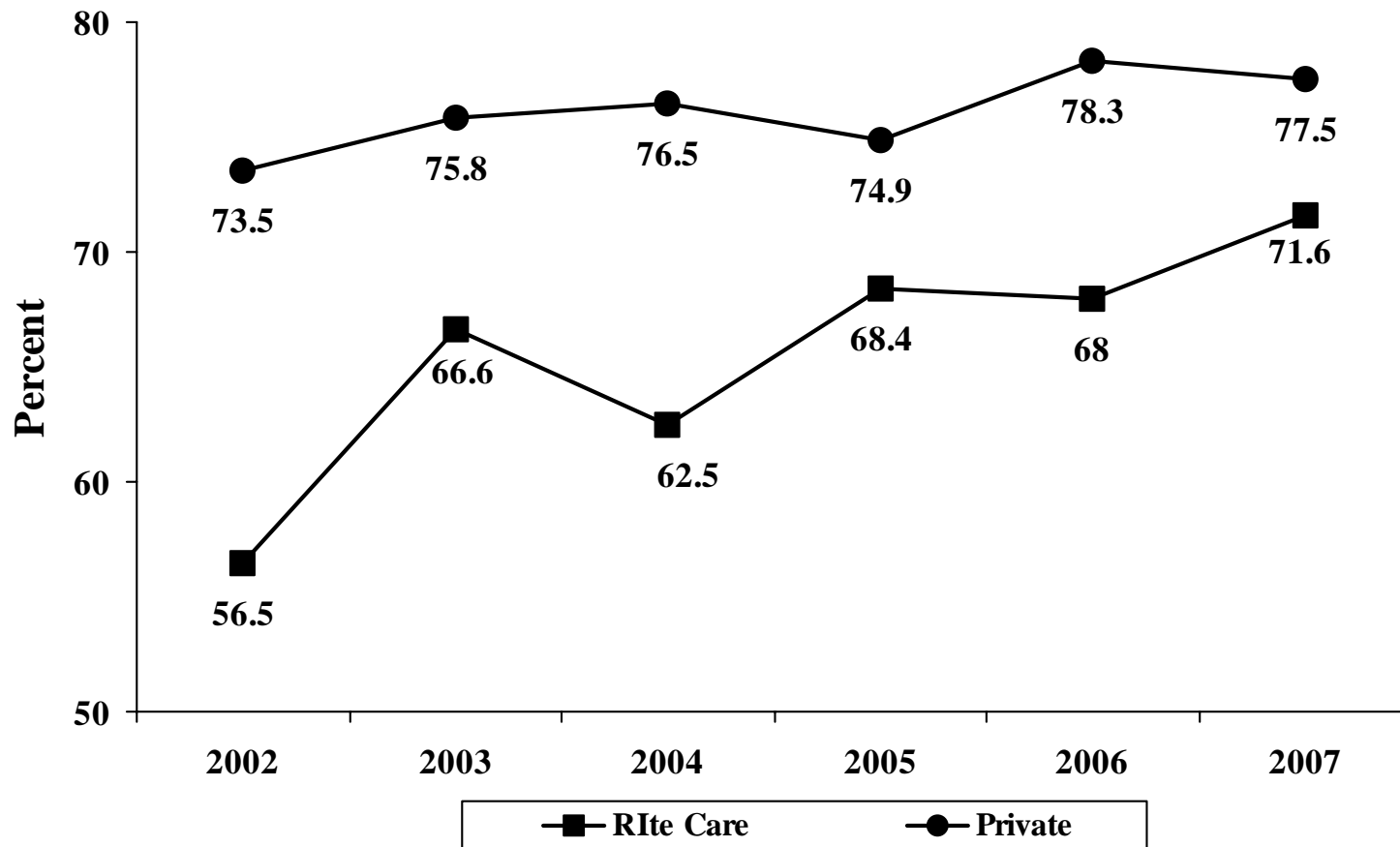
	2002	2003	2004	2005	2006	2007
<b>1) Percent of Women Who Ever Breastfeed</b>						
RItE Care	56.5	66.6	62.5	68.4	68.0	71.6
Private	73.5	75.8	76.2	74.9	78.3	77.5
<b>2) Percent of Postpartum Women Using Contraception</b>						
RItE Care	85.3	84.3	83.5	86.1	84.7	84.0
Private	83.6	81.9	88.2	85.9	85.7	87.1
<b>3) Percent of Women Who Had Postpartum Check-up</b>						
RItE Care	87.7	88.6	89.1	89.6	88.5	89.4
Private	97.8	95.9	97.1	95.1	96.4	95.7
<b>4) Percent of Pregnant Women Who Moved During Pregnancy</b>						
RItE Care	39.2	38.6	41.8	39.5	42.9	40.3
Private	29.5	23.7	25.9	25.8	26.7	25.4
<b>5) Percent of Pregnant Women Who were Homeless During Pregnancy</b>						
RItE Care	8.7	13.1	7.8	4.6	7.8	6.6
Private	1.0	1.4	1.2	0.2	1.3	0.6
<b>6) Percent of Pregnant Women Who Couldn't Pay Bills During Pregnancy</b>						
RItE Care	42.3	36.2	32.1	35.1	33.6	33.6
Private	12.3	11.9	10.6	10.0	12.2	14.3

Data Source: Prenatal Risk and Monitoring System (PRAMS), RI Department of Health, 2002-2007

	2002	2003	2004	2005	2006	2007
<b>7) Percent of Pregnant Women Who Argued more with Husband/Partner During Pregnancy</b>						
RIte Care	42.7	36.1	36.0	33.9	40.3	32.9
Private	20.5	20.3	16.3	16.8	17.0	18.4
<b>8) Percent of Women Who Have Moderate/Severe Postpartum Depression</b>						
RIte Care	24.7	25.6	NA	NA	NA	NA
Private	14.4	15.6	NA	NA	NA	NA
<b>9) Percent of Women who say Pregnancy was Very Hard to Worst Time of Life</b>						
RIte Care	NA	NA	13.2	10.5	10.3	10.5
Private	NA	NA	5.6	5.7	6.9	3.8
<b>10) Percent of Pregnant Women Whose Pregnancies are Unplanned</b>						
RIte Care	71.5	66.4	67.1	68.8	65.0	70.6
Private	32.1	32.3	34.1	31.9	34.9	29.6

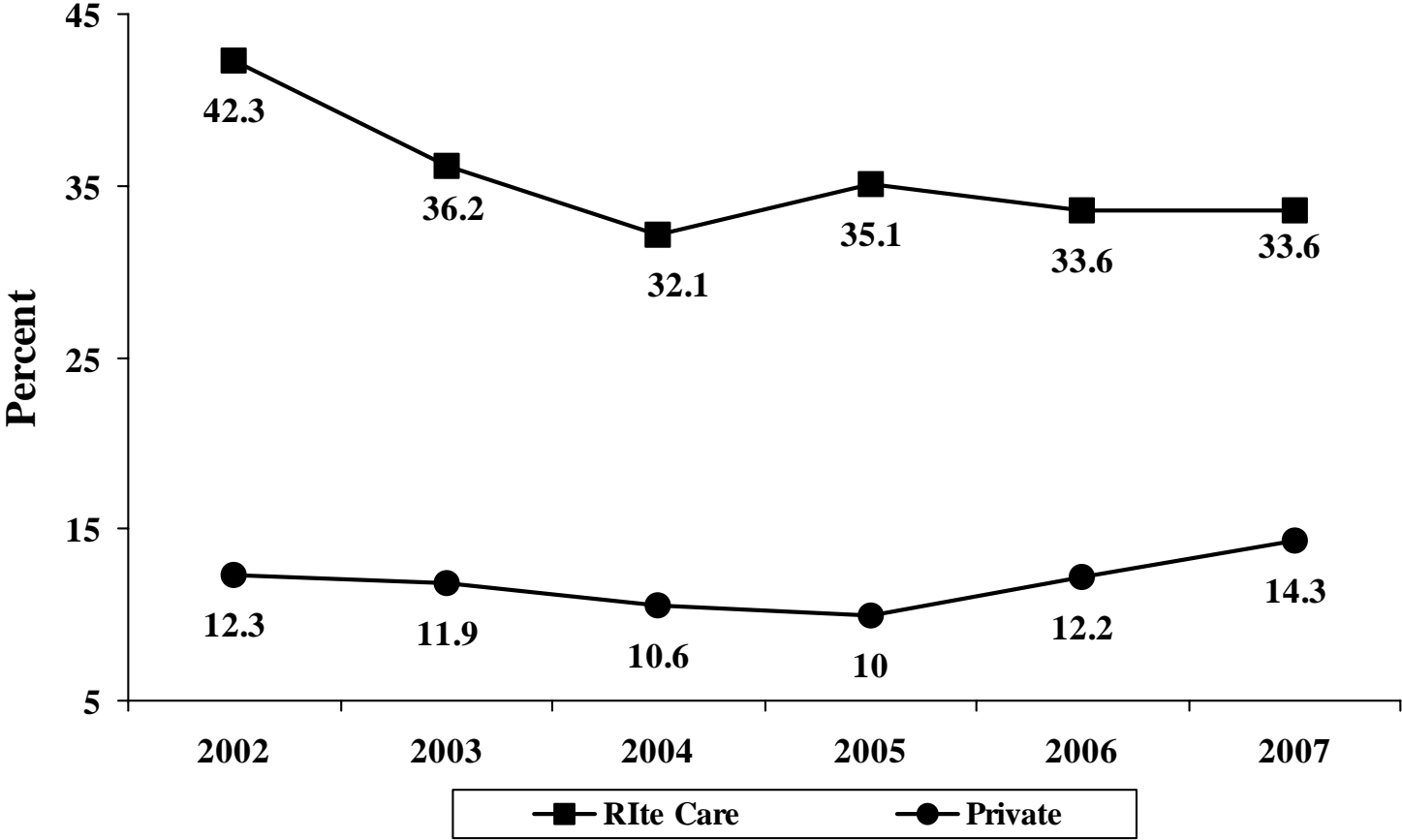
Data Source: Prenatal Risk and Monitoring System (PRAMS), RI Department of Health, 2002-2007

# Figure 15: Percent of Mothers Who Breastfeed by Health Insurance Coverage



Data Source: Prenatal Risk and Monitoring System (PRAMS), RI Department of Health, 2002-2006

# Figure 16: Percent of Pregnant Women Who Couldn't Pay Bills During Pregnancy by Health Insurance Coverage



Data Source: Vital Statistics Birth File, RI Department of Health, 2002-2007